

Contents

Symbols	5
Introduction	6
<i>Players (White first) and event</i>	
1 Gelfand – Dreev, Tilburg 1993	
2 Benjamin – Anand, Groningen PCA 1993	
3 Karpov – Morović, Las Palmas (1) 1994	
4 Adams – Agdestein, Oslo (2) 1994	
5 Yusupov – Dokhoian, Bundesliga 1993/4	
6 Gelfand – Hertneck, Munich 1994	
7 Kasparov – P. Nikolić, Horgen 1994	
8 Karpov – Salov, Buenos Aires 1994	
9 Timman – Topalov, Moscow OL 1994	
10 Shirov – Piket, Aruba (4) 1995	
11 Kasparov – Anand, Riga 1995	
12 J. Polgar – Korchnoi, Madrid 1995	
13 Kramnik – Piket, Dortmund 1995	
14 Kramnik – Vaganian, Horgen 1995	
15 Shirov – Leko, Belgrade 1995	
16 Ivanchuk – Topalov, Wijk aan Zee 1996	
17 Khalifman – Short, Pärnu 1996	
18 Kasparov – Anand, Amsterdam 1996	
19 Kasparov – Kramnik, Dos Hermanas 1996	
20 Timman – Van der Wiel, Dutch Ch 1996	
21 Svidler – Glek, Haifa 1996	
22 Torre – Ivanchuk, Erevan OL 1996	
23 Tiviakov – Vasiukov, Russian Ch 1996	
24 Illescas – Andersson, Ubeda 1997	
25 Shirov – Yusupov, Ter Apel 1997	
26 Salov – Illescas, Dos Hermanas 1997	
27 Bareev – Rozentalis, Pula Echt 1997	
28 Gelfand – Kasparov, Novgorod 1997	
29 Van Wely – Topalov, Antwerp 1997	
30 Kramnik – Gelfand, Belgrade 1997	
31 Lputian – Dlugy, New York Open 1998	
32 Krasenkow – Wahls, Bundesliga 1997/8	
33 Kramnik – Shirov, Cazorla WCC (9) 1998	
34 P. Nikolić – Van Wely, Dutch Ch 1998	
35 Nenashev – Georgiev, Recklinghausen 1998	
36 Shirov – Lautier, Spanish Cht 1998	
37 Van Wely – Morozevich, Elista OL 1998	
38 Hraček – Shirov, Ostrava (3) 1998	
39 Kasparov – Topalov, Wijk aan Zee 1999	
40 Topalov – Kasparov, Linares 1999	
41 Sadler – Krasenkow, Bundesliga 1998/9	
<i>Opening</i>	
Semi-Slav Defence [D48]	8
Sicilian Defence [B63]	13
Queen’s Gambit Declined [D32]	20
Alekhine Defence [B02]	25
Queen’s Gambit Declined [D31]	31
Benko Gambit [A57]	37
French Defence [C18]	43
Sicilian Defence [B66]	50
King’s Indian Defence [E87]	56
Semi-Slav Defence [D44]	60
Evans Gambit [C51]	66
Caro-Kann Defence [B19]	71
Catalan Opening [E05]	76
Queen’s Indian Defence [E12]	82
Ruy Lopez (Spanish) [C92]	88
English Opening [A26]	93
Queen’s Indian Defence [E12]	98
Caro-Kann Defence [B14]	104
Semi-Slav Defence [D48]	111
Sicilian Defence [B31]	117
French Defence [C07]	123
Sicilian Defence [B22]	128
Ruy Lopez (Spanish) [C65]	134
Sicilian Defence [B88]	141
Petroff Defence [C43]	146
Slav Defence [D17]	153
English Opening [A13]	158
Queen’s Indian Defence [E12]	163
Modern Benoni [A70]	171
King’s Indian Defence [E97]	180
Queen’s Gambit Accepted [D26]	187
Bogo-Indian Defence [E11]	194
Grünfeld Defence [D70]	198
English Opening [A30]	205
Benko Gambit [A59]	211
Sicilian Defence [B30]	217
Slav Defence [D17]	223
Sicilian Defence [B81]	228
Pirc Defence [B07]	236
Sicilian Defence [B80]	244
Queen’s Gambit Declined [D31]	252

42	J. Polgar – Adams, <i>Dos Hermanas 1999</i>	Ruy Lopez (Spanish) [C89]	258
43	Kasparov – Short, <i>Sarajevo 1999</i>	Nimzo-Indian Defence [E20]	263
44	Topalov – Leko, <i>Dortmund 1999</i>	Ruy Lopez (Spanish) [C65]	274
45	Shirov – Nisipeanu, <i>Las Vegas KO 1999</i>	Caro-Kann Defence [B12]	281
46	Kasparov – The World, <i>Internet 1999</i>	Sicilian Defence [B52]	289
47	Anand – Leko, <i>Linares 2000</i>	Grünfeld Defence [D85]	296
48	Timman – J. Polgar, <i>Malmö 2000</i>	Queen’s Indian Defence [E15]	301
49	Lutz – Smirin, <i>Saint Vincent Ech 2000</i>	Sicilian Defence [B33]	307
50	Anand – Khalifman, <i>Shenyang WCup 2000</i>	Sicilian Defence [B80]	313
	Index of Players		319
	Index of Openings		320

outright (Anatoly Karpov is a past master of this approach).

After 11...♘h3++! the position quickly became razor-sharp and especially with the objectively incorrect 16 ♗f6+?! acquired a do-or-die character. At the 2000 Olympiad in Istanbul, Lputian told the author that White has a guaranteed draw even after the critical 17...♙d8!. However, he didn't specify how and it remains a mystery, as he has never published any analysis of the game and 11 b4! hasn't appeared on the scene since. However, White's practical instinct was correct; wading through all the tactics proved to be an insurmountable task for Dlugy,

who nowadays plays only a few games a year. General considerations are not worth much in the position after 17 exf6, but one remark at least is pertinent – in such situations one should realize what the opponent's main attacking ideas are and try to prevent as many of them as possible. Nearly all the lines above show that Black's king can't survive in the corner; he acutely needs an escape-route. 17...♗d7? denied him the f8-square for one move too long, and afterwards White's win was rather simple. On the other hand, the multi-purpose 17...♙d8! would have severely tested White's creativity just in order to keep the game going.

Game 32

Michal Krasenkow – Matthias Wahls

Bundesliga 1997/8

Bogo-Indian Defence [E11]

1 **d4** ♘f6
2 ♗f3 e6
3 c4 ♙b4+
4 ♗bd2

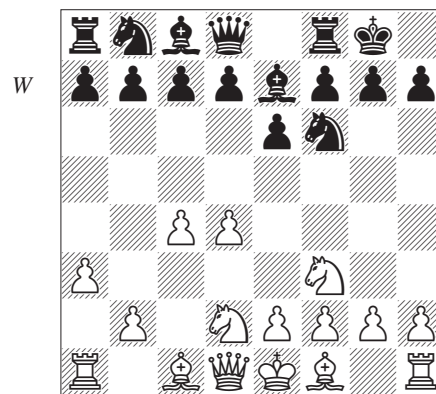
White intends to gain either time or the bishop-pair with a later a3. This move offers approximately the same chances for an opening advantage as the alternative continuation 4 ♙d2.

4 ... 0-0

At this point Black has to make an important decision, which greatly influences the character of the game. The text-move is played rarely nowadays and even Wahls, one of its most ardent supporters, has switched to other openings altogether. 4...c5 5 a3 ♙xd2+ 6 ♗xd2 doesn't have a very good reputation, while according to the current state of theory 4...d5 5 ♗a4+! ♗c6 6 a3 ♙xd2+ (6...♙e7 7 e3 0-0 8 ♗c2 isn't ideal either) 7 ♙xd2 ♗e4 8 ♙d1 doesn't completely solve Black's problems either. A less tested continuation is 4...d6, planning a transition into King's Indian pawn-structures by preparing ...e5. However, by far the most popular and arguably the best move is 4...b6, when White's two main attempts to fight for an edge are 5 a3 ♙xd2+ 6 ♙xd2 (6 ♗xd2!?) 6...♙b7 7 ♙g5 and 5 e3 ♙b7 6 ♙d3 0-0 7 0-0.

5 **a3** ♙e7 (D)

5...♙xd2+ 6 ♙xd2 b6 7 ♙g5! is less appealing for Black, as counterplay based on ...h6 and ...g5, which is possible in the 4...b6 line, would now seriously compromise Black's kingside.



6 **b4!?**

At the time the game was played, this was a relatively fresh new idea. Both 6 e3 and 6 g3 are too soft, so White's efforts concentrated mainly on the more ambitious 6 e4 d5 7 e5 (less dangerous is 7 ♗c2 dxe4 8 ♗xe4 ♗c6! 9 ♙d3 ♗xe4 10 ♙xe4 ♗xd4 11 ♗xd4 ♗xd4 12 ♙e3 ♗e5 13 ♙xh7+ ♗h8 14 ♙d3 as in Bareev-Adams, Dortmund 1992, when the solid move 14...♙d7 would have been more or less equal)

7...♖fd7 (7...♗e4?! is weaker due to 8 ♖c2 f5 9 exf6 ♗xf6 10 ♕d3) 8 cxd5 exd5 9 b4! (White does best to limit Black's queenside play; after the seemingly more natural 9 ♕d3 c5 10 0-0 ♗c6 11 ♖e1 a5!? Black develops freely and gets enough counterchances) 9...a5 10 b5 c5 11 ♕d3 cxd4 12 ♗b3 a4 13 ♗bxd4 ♗c5. Wahls had earlier achieved this position in at least three games and he never experienced any problems after meek moves such as 14 0-0 or 14 h3. However, the most natural continuation is 14 ♕c2, preserving the active bishop and giving White a pleasant position.

6 ... d5

Black logically prevents the aforementioned central expansion. After the weaker 6...b6 7 e4 d5 8 e5 ♗fd7 White can achieve an advantageous version of the 6 e4 line by 9 cxd5! (9 ♕d3 c5 10 dxc5 bxc5 11 b5 f6 12 exf6 ♕xf6 13 ♖b1 a6 14 bxa6 ♗c6 is less consistent and unclear, Krasenkow-Aleksandrov, Moscow PCA rpd 1996) 9...exd5 10 ♖b3 ♕b7 11 ♕d3 ♖e8 12 0-0 ♗f8 13 ♖e1 c6 14 ♗f1 ♗e6 15 ♗e3 g6 16 ♕b2 a6 17 ♕f1 ♗d7 18 a4 ♗df8 19 ♖ed1 with an imposing space advantage and attacking chances for White, Chuchelov-Makarov, Novosibirsk 1989.

7 ♖c2

This is the most flexible continuation. 7 e3 leads to a position that arises more often via the 4...d5 5 e3 0-0 move-order. As White sometimes advantageously plays e4, the text-move can save him a tempo. 7 c5 is also interesting; then White doesn't have to fear 7...♗e4 8 ♖c2 f5?! since he has an edge after 9 e3. Nevertheless, the immediate release of the central tension is rather committal.

7 ... ♗bd7 (D)

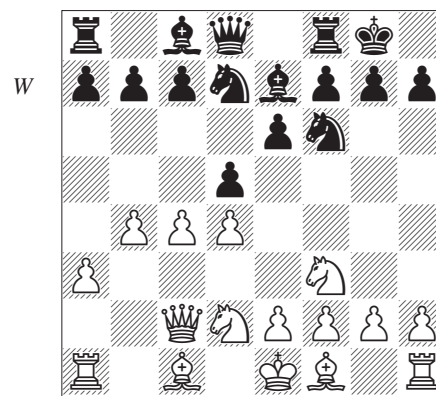
This passive reaction gives White a permanent space advantage. Other ideas:

1) The aggressive attempt to break up White's queenside pawn-chain by 7...a5 is questionable: 8 b5 dxc4 (after 8...c5 9 cxd5 ♖xd5 10 e4 ♖h5 11 ♕e2 Black has problems with developing his queenside; 8...c6 9 bxc6 ♗xc6 10 e3 is also good for White) 9 e4!? (9 ♗xc4 c6 is less promising for White, as Black's lead in development gives him counterplay) 9...c6 10 ♕xc4 and White is better thanks to his pawn-centre.

2) 7...c6 is more patient, and preferable. Then 8 c5 (more ambitious, but also more risky

is 8 e4 dxe4 9 ♗xe4 ♗xe4 10 ♖xe4 a5 11 ♖b1) 8...a5 9 ♕b2 b6 leads to a similar position to later in the game.

3) 7...b6 (also preferable to the text-move) 8 c5 (otherwise Black can play ...c5) 8...c6 (8...a5?! is weaker, as after 9 b5 c6 10 a4 Black can't resolve the tension adequately and White will be able to support his advanced pawns by ♕a3, ♖c1, ♗b3, etc.) 9 a4 ♖c7!?. White is still behind in development and Black has counterplay involving a timely ...a5 or even ...e5 break.



8 c5!

This move cramps Black and gives White chances to play on both flanks. The liberating ...e5 is now practically out of the question. 8 e4 is less consistent and gives Black counterplay after 8...dxe4 9 ♗xe4 b6.

8 ... c6

9 e3

However, this is too tame. The time was ripe for 9 e4!. After 9...dxe4 10 ♗xe4 Black gets a position structurally similar to the one he could have achieved later by 19...dxe4, but with an important difference – here he is saddled with the passive bishop on c8.

9 ... ♖c7

10 ♕b2 b6

11 ♕d3 bxc5?!

There was no need to hurry; 11...a5 12 0-0 ♕a6 is more flexible. After the exchange of the light-squared bishops, Black can himself choose how and when to resolve the queenside tension. In this case White's advantage would be infinitesimal at best.

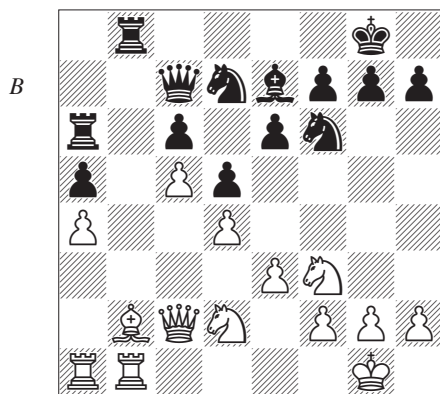
12 bxc5 a5

13 0-0 ♕a6

14 ♖xa6 ♜xa6
15 a4! ♜b8

The more active 15...e5!? works tactically, but after 16 ♖xe5 (16 dxe5 ♖g4 17 ♗f5?! is inferior due to the reply 17...♖h6) 16...♖xe5 17 dxe5 ♖d7 18 ♖d4 ♖xe5 19 ♗c3 (19 ♜ab1!?) 19...♖g4 (after 19...♖f6 20 e4!? White threatens f4 and e5) 20 ♖f3 ♖f6 21 ♜ab1 White retains an edge.

16 ♜fb1 (D)



The opening is over and in addition to his space advantage, White also controls the b-file. Only one of Black's rooks can participate in the fight for the only open file, as the black a-pawn is vulnerable to attack (♖c3, ♖b3 and ♗d2).

16 ... ♗c8
17 ♖c3 ♜xb1+
18 ♜xb1 ♖d8
19 e4

Instead of this direct move, Krasenkow recommends the subtler 19 ♖e1!?. The idea is to prepare the central expansion gradually; after 19...♖c7 20 ♖d3 ♜a7 21 f3 ♗e8 22 ♗b2! (22 e4 is weaker due to 22...dxe4 23 fxe4 e5) the ...e5 break is stopped and White is better.

19 ... ♜a7?!

Wahls again reacts passively at another important moment. Although 19...dxe4 20 ♖xe4 ♖xe4 21 ♗xe4 followed by ♖d2-c4 allows White to retain his pull, Black would have had more counterchances than in the game.

20 e5

Krasenkow doesn't hesitate to increase his space advantage.

20 ... ♖h5
20...♖e8 is more solid.

21 ♖b3

The threat is ♗d2, simultaneously attacking a5 and h5 (g4 wins the knight).

21 ... ♗a6
22 ♖d2 f5
23 exf6?!

This is a logical attempt to open up the king-side with Black's major pieces tied down on the opposite flank. However, it squanders most of White's advantage, as Black gains breathing space for his forces. Black remains boxed in without effective counterplay after 23 h3 g6 24 g4 (or even 24 ♖g5!?).

23 ... gxf6!

Central control is important. 23...♖hxf6 is weaker due to 24 ♖f4.

24 ♖c1

This allows Black to exchange his passive rook. Therefore 24 ♜e1!? ♖f8 (24...♗c4 25 ♗xc4 dxc4 26 ♖a1 saddles Black with another weakness on c4) 25 ♖h6 deserved attention; then White has more attacking chances than he gets in the game.

24 ... ♖c7

24...♜b7?! 25 ♜xb7 ♗xb7 26 ♖b3 costs Black a pawn.

25 ♖d3 ♜b7

The line 25...e5? 26 dxe5 fxe5 27 ♖fxe5! ♖xe5 28 ♖xe5 ♖xe5 29 ♗f5 shows that Black must be very careful about opening the position prematurely.

26 ♜xb7

After 26 ♜e1 White must seriously reckon with 26...♗c4!.

26 ... ♗xb7

27 g4

The a-pawn already isn't worth the invested time; after 27 ♖c1?! ♖g7 28 ♖b3 ♗a6 29 ♗c3 e5 30 ♖xa5 ♖e6 the initiative passes to Black, and in any case White can't retain his booty for long.

27 ... ♖g7

28 ♖h6

The immediate 28 g5?! allows the reply 28...♖f5.

28 ... ♖f8

This move is not bad, but Black had other moves:

1) Now that the a-pawn is safe he could have moved his queen closer to the main scene of action with 28...♗b8 29 ♗e2 (29 ♖xg7 ♖xg7

30 g5 ♖f8 gets White nowhere) 29...♖e8 and White's advantage is minimal.

2) More interesting is the double-edged 28...e5 29 ♗xg7 ♗xg7 30 ♖h4!? e4 31 ♖f5+ (31 ♖b2 ♖f8 32 f3 ♖b4! 33 ♖f5+ ♗h8 is also unclear) 31...♗f7 (31...♗h8!?), and now:

2a) Despite the strong knight on f5 and the danger presented by a possible entry of White's queen, Black holds his own in the complications after 32 ♖d2?! (32 ♖c1 is similar):

2a1) 32...exd3 33 ♖e3! (33 ♖h6? is weak due to 33...♖b1+ 34 ♗g2 ♖e1) 33...♖e5 34 ♖h6! (after 34 dxe5 ♗xe5 35 ♖xd3 ♖b4 it is already White who is fighting for a draw) 34...♖xg4 35 ♖g7+ ♗e6 36 ♖xg4 h5 37 ♖xh5 (37 ♖g7+ ♗f7 38 ♖xh5 ♖b1+ 39 ♗g2 d2 40 ♖g7+ ♗e6 gets White nowhere) 37...♖b8 38 ♖h3! and as White threatens ♖d6+ with a mating attack, he will win the d3-pawn and can continue harassing Black's vulnerable king.

2a2) However, Black has the less greedy 32...♖b3!. Since 33 ♖h6? is met by 33...♖d1+, White is then fighting to save the game.

2b) 32 ♖e1 is more sedate; after 32...♖b4 33 ♖c1 ♗e8! Black escapes from the danger zone just in time.

2c) Paradoxically, 32 ♖b2!? is somewhat better. Now Black must be careful, as 32...♖b4 is risky in view of 33 ♖c1 and 32...♖f8 33 ♖c1 ♗e8 34 ♖h6! ♖xb2 35 ♖xf6 ♗xh2+ 36 ♗g2 ♖g6 37 ♖xc6+ ♗d8 38 ♖xd5+ ♗c7 39 ♖f7+ ♗c6 40 ♖e6+ ♗c7 41 ♖b6+ also illustrates the possible dangers. More circumspect is 32...♖b8, when Black is very close to full equality.

29 ♗xg7

With the approaching time-control the play becomes more concrete. White would have liked to postpone this exchange, but Black was intending to play ...e5 after the consolidating ...♖g6. An attempt to prevent this with 29 h4 runs into 29...♖c8 or even 29...e5!? 30 dxe5 ♖c8.

29 ... ♗xg7
30 g5 ♖g6

Black could also have played 30...fxg5 31 ♖xg5 h6 32 ♖f3 ♖g6 33 ♖e2 (33 h4 ♗b8 34 h5 ♖f7! favours Black) 33...♖b1+ 34 ♖f1 ♖f4 35 ♖xf4 ♗xf4 36 ♖xe6 ♗d2 37 ♗f1 ♖c1, when due to the strong pin White can't improve his position. However, Wahls was also running short of time.

31 gxf6+ ♗xf6
32 h4 h5

This is playable, but certainly not forced. After 32...♖f4!? White does best to force a draw by 33 ♖g5 (33 ♖de5?! ♗xe5 34 dxe5+ ♗g7 35 ♖g5 ♗g8 is dangerous only for White) 33...h6 34 ♖xf4 ♗xf4 35 ♖xe6! ♗b8! 36 h5 ♗xe6 (36...♖f7 is no better due to 37 ♖d8) 37 ♖g6+ ♗d7 38 ♖g7+ with a perpetual.

33 ♖c1

33 ♖d2? ♖b1+ 34 ♖fe1 (34 ♗g2? ♖xd3!) 34...♖xh4 (34...♖a1!? 35 ♖g5+ ♗f7 is equivalent) 35 ♖h6+ ♖g6 hands the advantage over to Black, so for the time being the black queen must be kept at bay.

33 ... ♖b3?

Understandable activity, but this mistake loses the game. The prophylactic 33...♗g7! was necessary, when the direct tries for White lead nowhere:

1) 34 ♖g5 ♖b1+ 35 ♖de1 (35 ♖fe1? is weaker in view of 35...♖d1) 35...♖f5 36 ♖xf5 exf5 with an equal endgame.

2) 34 ♖g5 ♗f6 35 ♖e1 (35 ♖f3 or 35 ♖h7+ leads to repetition) 35...♖c8 with a balanced position (after 35...♖xh4? 36 f4! ♗xf4 37 ♖xf4 ♗xg5 38 ♖g3+ Black loses a piece).

3) Even the more refined 34 ♖d1!? is well met by 34...♗b8!. The queen aims for e7 or f7 and 35 ♖g5 (after 35 ♗h1 ♖e7 36 ♖g5 ♗h6 37 ♖d2 ♖xh4 the discovered check promises White nothing) 35...♖xh4 36 ♖xe6+ ♗g8 obliges White to guard his weak back rank.

34 ♖g5+ ♗f7

34...♗g7 35 ♖fe5 ♗xe5 36 ♖xe5 ♖b1+ 37 ♗h2 is even worse for Black.

35 ♖de1! (D)

